

Acoustic Detail CA 10  
Tenant Separation

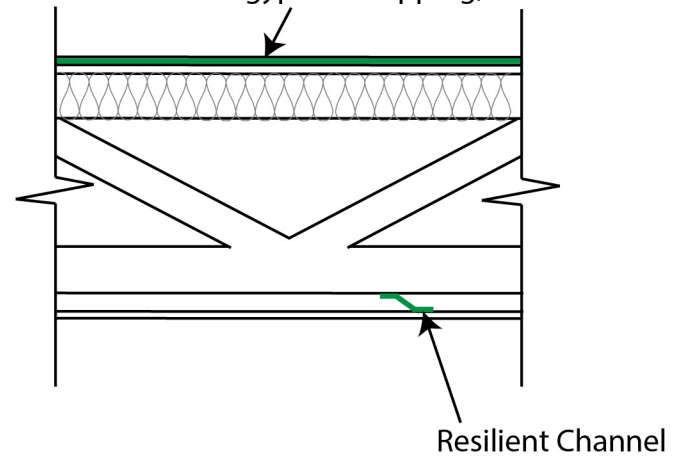
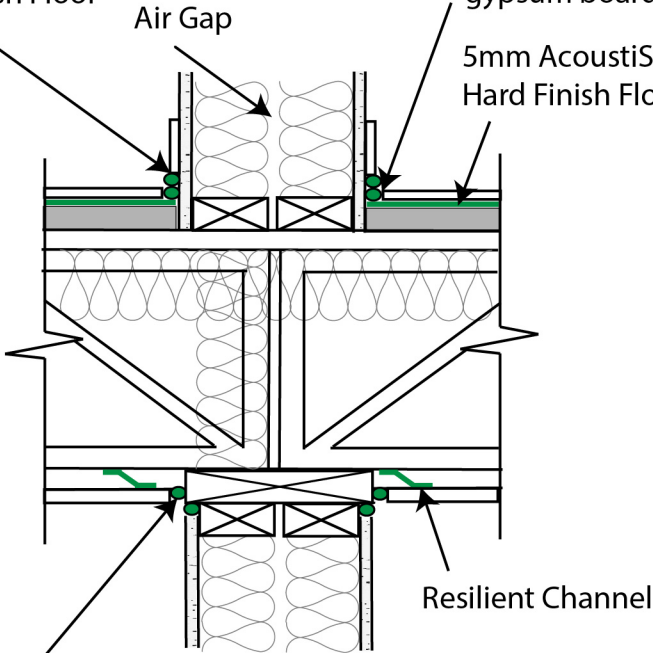
1/4" Continuous Bead of Acoustic Caulk to be applied at bottom of baseboard to prevent rigid connection with Finish Floor

Air Gap

1/4" Continuous Bead of Acoustic Caulk to be applied at edge of Finish Floor to prevent rigid connection with gypsum board or base plate

5mm AcoustiStep, installed below Hard Finish Floor, above Gypcrete

5mm AcoustiStep under all hard surfaces (adhered directly to gypcrete topping)



1/4" Continuous Bead of Acoustic Caulk to be applied at ceiling and top of wall to prevent rigid connection of gypsum to adjacent gypsum or wood header