

Technical Data

Wall Blokker™

Acoustical Sound Barrier

*World's First Soundproofing Membrane designed specifically to increase sound attenuation across walls –
Hit Higher STCs at a fraction of the Cost*

Commercial Acoustics Wall Blokker is an engineered barrier for sound reduction. Wall Blokker is an EVA mass loaded barrier, which is flexible and designed for commercial, industrial and residential applications. It is used behind a finished wall to reduce noise transfer across a wide array of frequencies, improving the STC of the partition.

Unlike traditional Mass Loaded Vinyl, Wall Blokker was developed in the automotive industry to provide superior soundproofing performance with long life-cycles and without off-gassing and other degrading processes. At 1/8" thick, a single layer can provide equivalent soundproofing to multiple layers of drywall, often at a fraction of the price and schedule.

Product Specifications:

- Made with an engineered recycled Acoustical Grade Polymer.
- EVA (Ethylene Vinyl Acetate) Base - does not require plasticizers
- Non PVC (no ozone depleting gasses) and no VOCs
- 3-in-1 barrier (sound, moisture and air)
- Mold and mildew resistant
- Delta-STC of 8-12 points, depending on Wall Type
- High STC performance in single and multiple layer applications
- Flexible & easy to cut and install
- Made in the USA

Product Performance:

- Acoustic Properties: Minimum STC 26 per ASTM E 90-02
- Flammability rating: Class A per ASTM E 84
- Mold & Mildew: No fungal or algae growth per ASTM D3273 and ASTM G 21.
- Fire Resistance: Rated for 1hr and 2 hr walls per ASTM E 119-08.
- Standard Sheet Dimensions
 - 4' by 8' sheet size
 - 4' by 25' roll size
 - Factory Cut to Wall Length to Minimize Scrap
- Sheet Weight
 - 1/8" Thick
 - 1 lb/ft² nominal
- Standard Tolerances
 - Width: + 0.5" - 0"
 - Length: +1% - 0"
 - Nominal Thickness: ±0.10"

Tested and approved for use in all wall designs of the U300, U400, and V400 series.



6122 Benjamin Rd. • Tampa, Florida 33634 • 888-815-9691
www.Commercial-Acoustics.com • info@commercial-acoustics.com



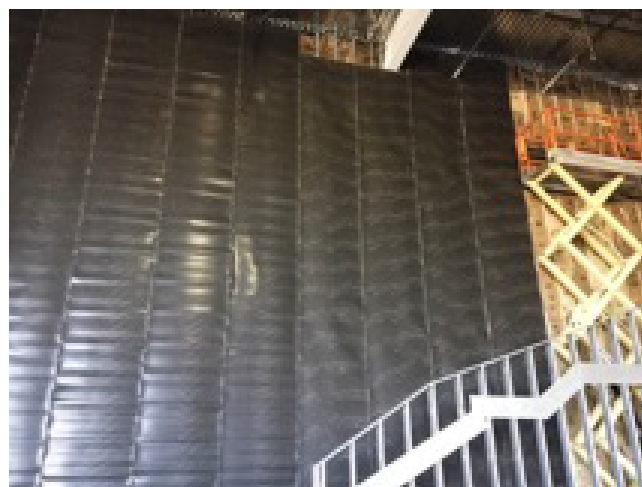
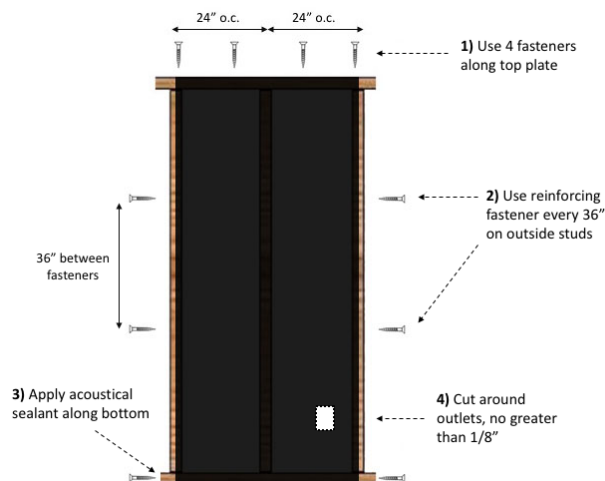
Frequency (Hz)	125	250	500	1000	2000	4000	STC	Test Number
Baseline Wood Studs	21	31	39	51	38	50	34	IRC-IR-693
Wall Blokker 1 side, 16" oc	17	35	42	50	47	57	41	RAL-TL08-138
Baseline Metal Studs	22	42	56	62	48	50	44	RAL-TL08-183
Wall Blokker 1 side, 16" oc	28	42	55	60	58	61	53	RAL-TL08-184
Wall Blokker 1 side, 24" oc	34	45	56	60	57	62	56	RAL-TL08-152
Wall Blokker 2 sides, 24" oc	42	53	60	64	64	70	62	RAL-TL08-155

Installation:

1. Ensure surface is clean and dry
2. Wall Blokker attaches to wood studs with staples or screws, and metal studs with pan-head screws
3. Roll the Wall Blokker to the proper length of the wall, measured vertically
4. Start at the top of the wall, securing the Wall Blokker to the header stud with 4-5 staples or screws
5. Roll the membrane downward, so that each edge is directly in the middle of the adjacent stud. Do not lap edges.
6. Secure the membrane to the perimeter studs at 36" inches, nominally
7. Taping of the edges is optional
 - a. Mandatory if the edge does not fall on the stud face
8. Use standard drywall screws when fastening drywall board to the studs through the membrane. Wall Blokker is an EVA polymer that will tighten around the screws like a gasket
9. If holes/tears should take place, simply place vinyl tape over the gap
10. At bottom and top of the wall, ensure that gaps are less than or equal to 1/4". Fill in gaps with non-hardening caulk
11. For HVAC, plumbing, or electrical penetrations, fill gap with fiberglass batting as needed and close with caulk
12. For overhead placement, placement on top of drywall prior to installation is recommended
13. Installation should not begin until all other trades are finished in the area
14. It is recommended that areas to receive Wall Blokker be weather tight. Materials can be stiff and less pliable at low temperatures

Installation Overview:

- Installs vertically, directly to studs, beneath the drywall
- Installation requires two or more capable technicians/hangers
- No special training required



Tested and approved for use in all wall designs of the U300, U400, and V400 series.