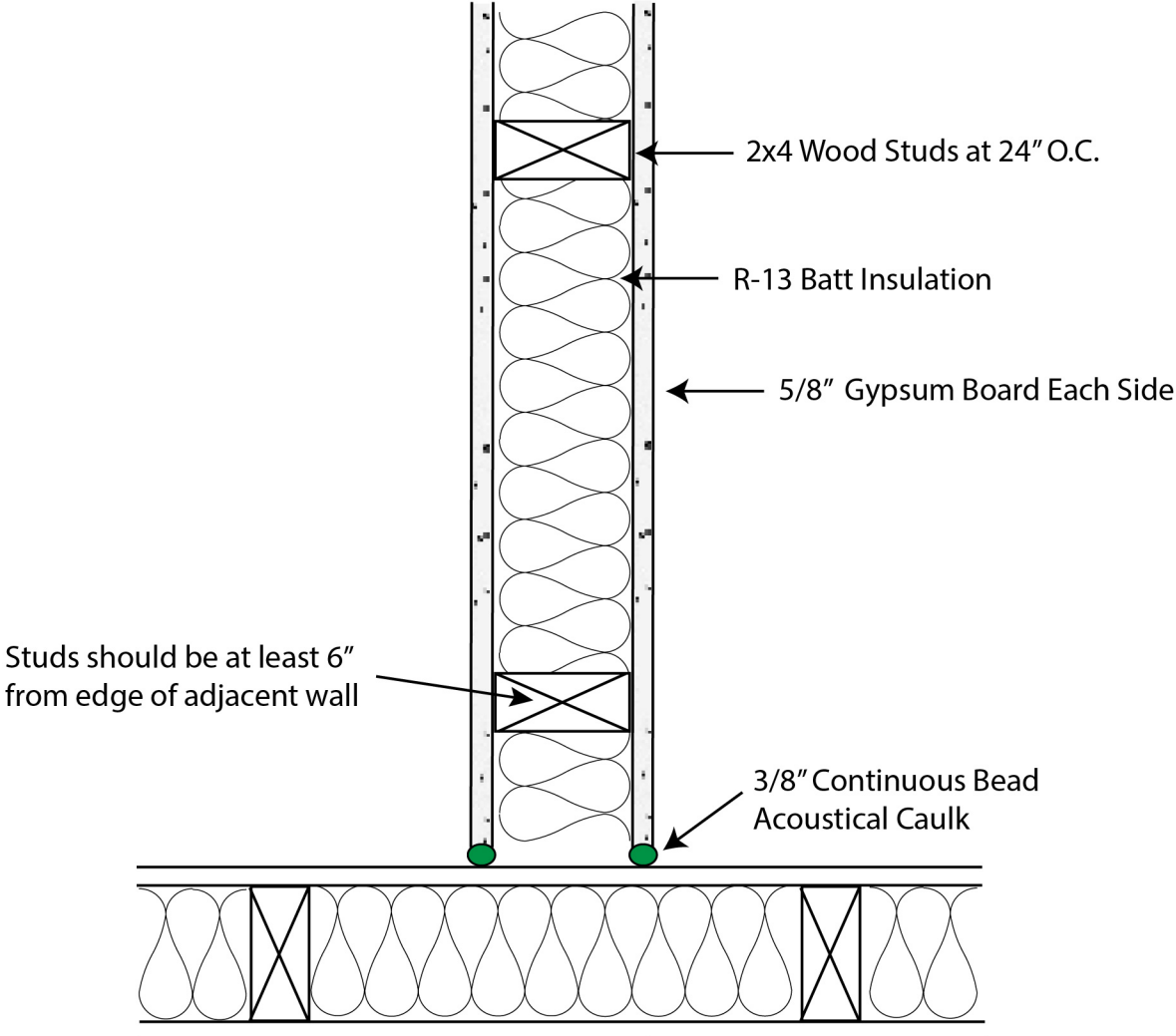


Acoustic Detail CA 3  
Wall-to-Wall Intersection



Studs should be at least 6" from edge of adjacent wall

2x4 Wood Studs at 24" O.C.

R-13 Batt Insulation

5/8" Gypsum Board Each Side

3/8" Continuous Bead Acoustical Caulk

Prevent drywall-to-drywall contact (using spacers or backer rod if needed)

NOTE: Caulk between the drywall connection, not on top of it